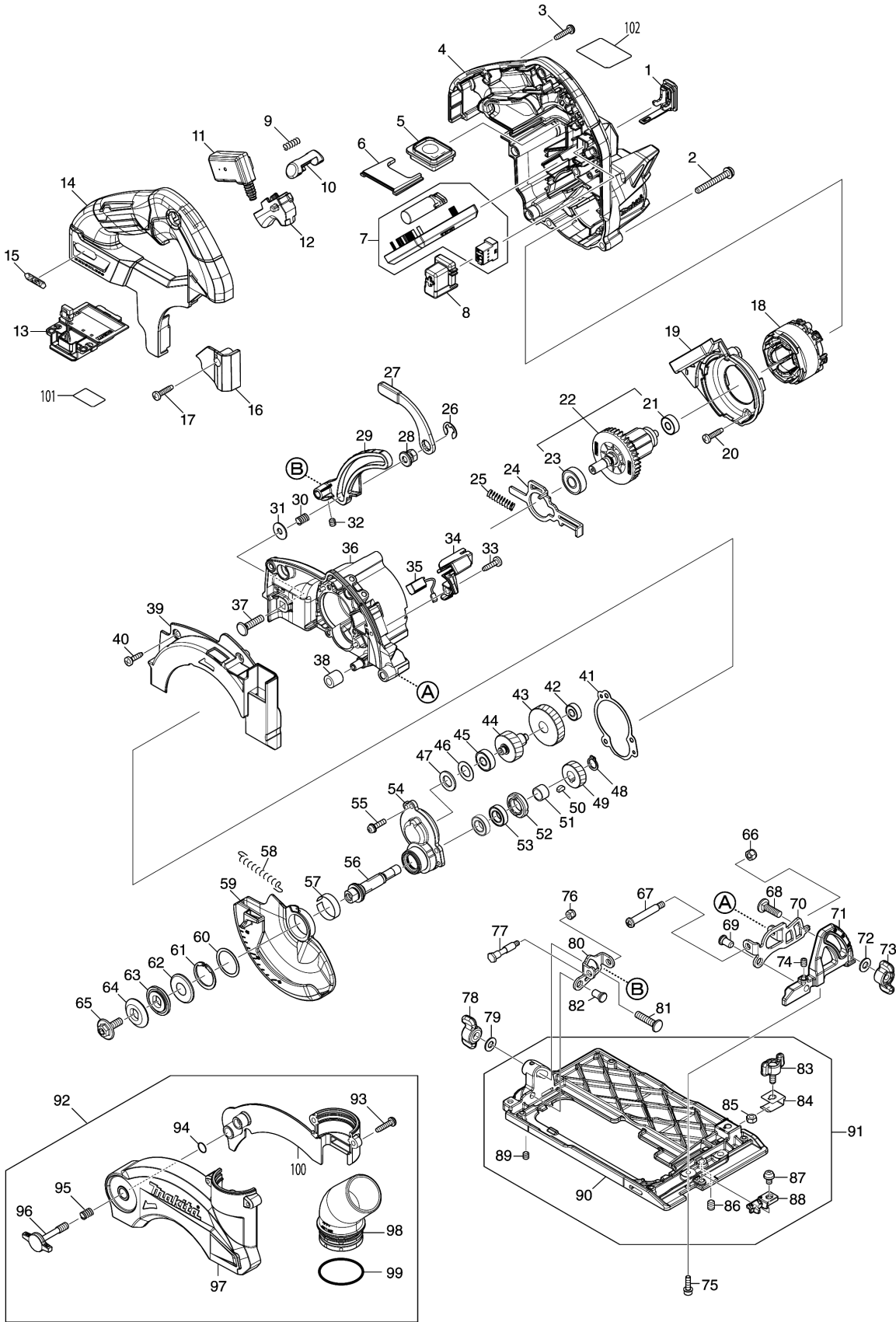


Model No.KS001G 125MM DC DUSTLESS CIRCULAR SAW



Model No.KS001G 125MM DC DUSTLESS CIRCULAR SAW

分解圖號	零件編號	品名	交換	數量	New/Old	選擇1	選擇2	註記
001	140F99-0	CAP COMPLETE		1				
C10	213218-6	O RING 16		1				
C20	818H07-8	CAP LABEL		1				
002	911263-2	PAN HEAD SCREW M5X40		3				
003	265995-6	TAPPING SCREW 4X18		6				
004	183U72-7	MOTOR HOUSING SET		1				
C10	263005-3	RUBBER PIN 6		2				
D10		INC. 14,15						
005	620F77-1	SWITCH CIRCUIT COMPLETE		1				
C10	8040B1-2	SWITCH LABEL		1				
006	412741-0	SWITCH COVER		1				
007	620F75-5	CONTROLLER		1				
008	459256-6	HOLDER		1				
009	231433-0	COMPRESSION SPRING 4		1				
010	459264-7	LOCK OFF BUTTON		1				
011	650008-0	SWITCH C3XB-1LPSPM		1				
012	413975-8	SWITCH LEVER		1				
013	632P76-1	TERMINAL UNIT		1				
014	183U72-7	MOTOR HOUSING SET		1				
C10	263005-3	RUBBER PIN 6		2				
D10		INC. 4,15						
015	8005T5-8	XGT LOGO LABEL		1				
016	413972-4	LEAD COVER		1				
017	265995-6	TAPPING SCREW 4X18		1				
018	629A14-2	STATOR		1				
019	412740-2	BAFFLE PLATE		1				
020	265995-6	TAPPING SCREW 4X18		2				
021	210031-3	BALL BEARING 606DDW		1				
022	510505-7	ROTOR ASSY		1				
D10		INC. 21,23						
023	210051-7	BALL BEARING 609LLB		1				
024	347643-0	SHAFT LOCK		1				
025	233117-6	COMPRESSION SPRING 6		1				
026	257982-9	BOW STOP RING E-8		1				
027	162940-1	LEVER		1				
028	252265-2	HEX. NUT M6		1				
029	312A12-0	DEPTH GUIDE		1				
030	232556-7	COMPRESSION SPRING 6		1				
031	253047-5	FLAT WASHER 6		1				
032	266264-8	H.S.SET SCREW(FLAT POINT)M5X6		1				
033	266034-5	TAPPING SCREW CT 4X16		1				

Model No.KS001G 125MM DC DUSTLESS CIRCULAR SAW

分解圖號	零件編號	品名	交換	數量	New/Old	選擇1	選擇2	註記
034	413973-2	LIGHT CASE		1				
035	620F76-3	LED CIRCUIT		1				
036	141H03-4	GEAR HOUSING COMPLETE		1				
C10	213953-6	O RING 24		1				
C20	8043M9-1	CAUTION LABEL		1				
037	266931-5	FLAT HEAD SQ. NECK BOLT M6X25		1				
038	262523-8	RUBBER SLEEVE 6		1				
039	413970-8	BLADE COVER		1				
040	266034-5	TAPPING SCREW CT 4X16		2				
041	459253-2	GASKET		1				
042	210033-9	BALL BEARING 696ZZ		1				
043	226883-2	HELICAL GEAR 45		1				
044	227906-9	HELICAL GEAR 23		1				
045	210062-2	BALL BEARING 607ZZ		1				
046	253376-6	FLAT WASHER 11		1				
047	262180-2	RUBBER RING 11		1				
048	961006-2	RETAINING RING S-10		1				
049	227907-7	HELICAL GEAR 20		1				
050	254031-3	WOODRUFF KEY 3		1				
051	257493-4	SLEEVE 10		1				
052	285847-5	BEARING RETAINER 14-23		1				
053	211485-7	BALL BEARING 6800LLU		2				
054	140J72-4	BEARING BOX COMPLETE		1				
C10	263002-9	RUBBER PIN 4		1				
055	911128-8	P.H.SCREW M4X16 WITH WR		3				
056	327339-9	SPINDLE		1				
057	346679-6	THICKNESS RING 23		1				
058	231792-2	TENSION SPRING 3		1				
059	413971-6	SAFETY COVER		1				
060	267471-6	FLAT WASHER 23		1				
061	961122-0	RETAINING RING S-22		1				
062	253390-2	CUP WASHER 12		1				
063	224417-5	INNER FLANGE 28		1				
064	224421-4	OUTER FLANGE 28		1				
065	266458-5	HEX.SOCKET HEX.BOLT M6X18		1				
066	252103-8	HEX. LOCK NUT M5-8		1				
067	265056-2	+ PAN HEAD SCREW M5		1				
068	251919-8	CAP SQUARE NECK BOLT M6X20		1				
069	256336-7	SHOULDER PIN 6-7		1				
070	347862-8	ANGULAR GUIDE		1				

Model No.KS001G 125MM DC DUSTLESS CIRCULAR SAW

分解圖號	零件編號	品名	交換	數量	New/Old	選擇1	選擇2	註記
071	312B90-6	ANGULAR PLATE		1				
072	941151-9	FLAT WASHER 6		1				
073	252649-4	THUMB NUT M6		1				
074	266264-8	H.S.SET SCREW(FLAT POINT)M5X6		1				
075	251501-3	HEX. SOCKET HEAD BOLT M4X14		2				
076	252126-6	HEX. LOCK NUT M4-7		1				
077	266932-3	HEX. BOLT M4		1				
078	252649-4	THUMB NUT M6		1				
079	941151-9	FLAT WASHER 6		1				
080	347511-7	REAR ANGULAR GUIDE		1				
081	266309-2	CAP SQUARE NECK BOLT M6X26		1				
082	256336-7	SHOULDER PIN 6-7		1				
083	265C09-9	THUMB SCREW M5X12		1				
084	232719-5	LEAF SPRING		1				
085	931202-6	HEX. NUT M5		1				
086	266225-8	H.S.SET SCREW(FLAT POINT)M6X8		1				
087	911203-0	PAN HEAD SCREW M5X8		1				
088	413974-0	TOP GUIDE		1				
089	266264-8	H.S.SET SCREW(FLAT POINT)M5X6		1				
090	312B92-2	BASE		1				
091	136542-9	BASE ASSY		1				
D10		INC. 83-90						
092	122A85-3	DUST COVER ASSEMBLY		1				
D10		INC. 93-100						
093	265995-6	TAPPING SCREW 4X18		3				
094	213005-3	O RING 5		1				
095	233267-7	COMPRESSION SPRING 7		1				
096	251550-0	THUMB SCREW M6X35		1				
097	413968-5	DUST COVER R		1				
098	416741-2	ELBOW		1				
099	213460-9	O RING 35		1				
100	413969-3	DUST COVER L		1				
101	8112V2-5	KS001G SERIAL NO. LABEL		1				
102	8112V0-9	KS001G NAME PLATE		1				
A01	164095-8	GUIDE RULE		1				
A02	783203-8	HEX. WRENCH 5		1				

Please order the parts with part number.

Print Date 2021/7/7