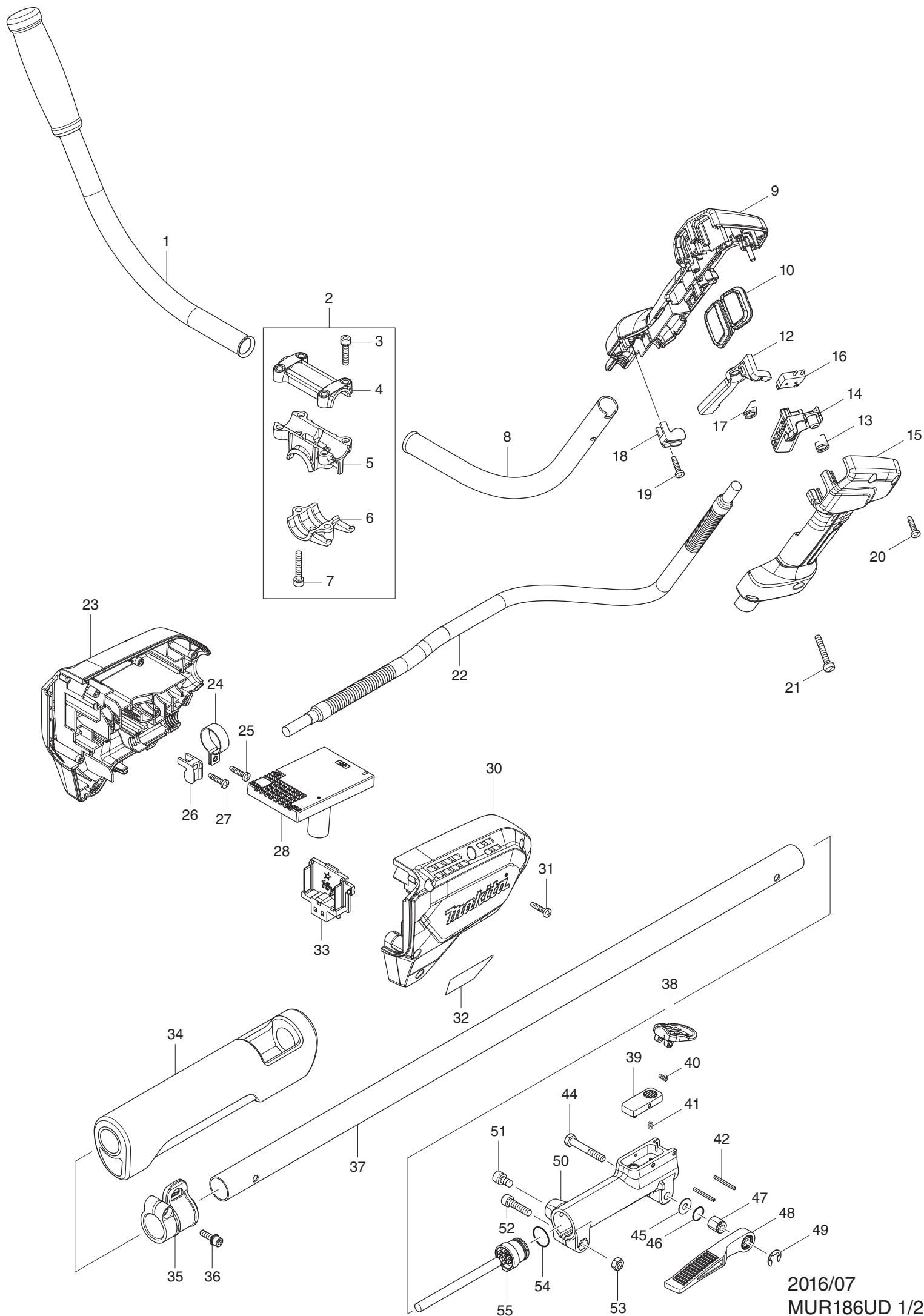
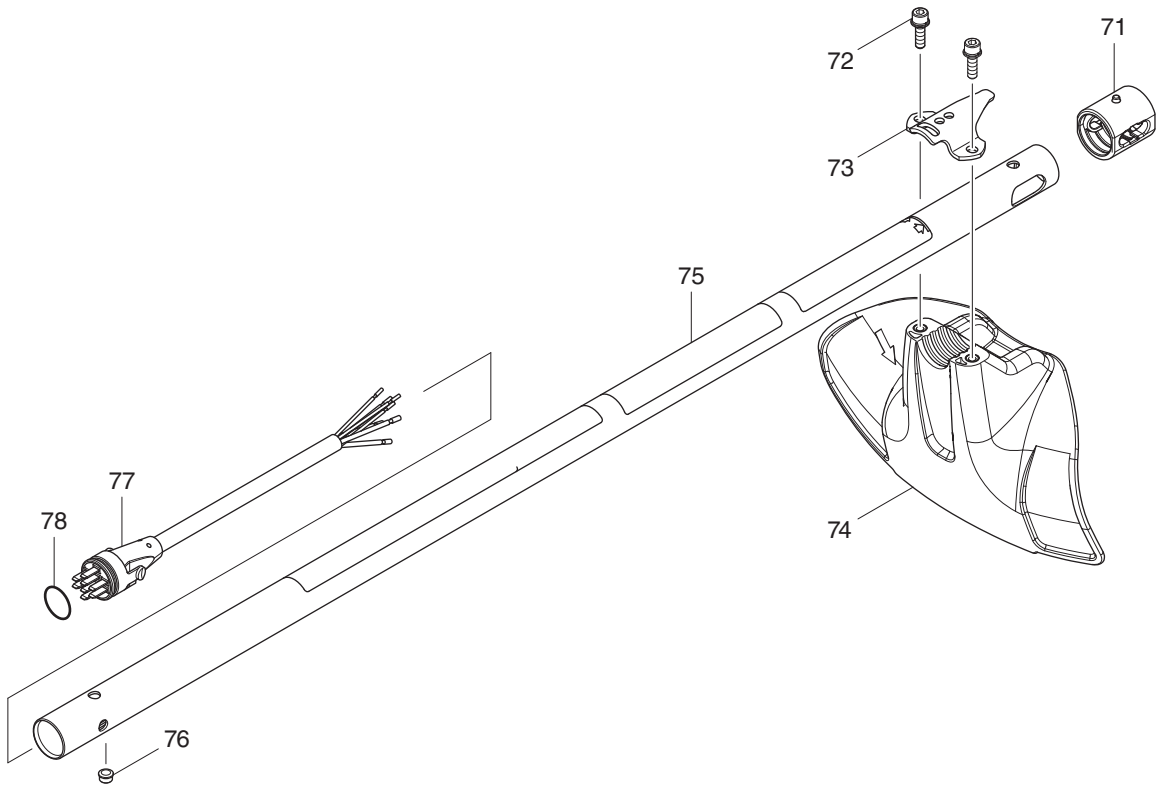
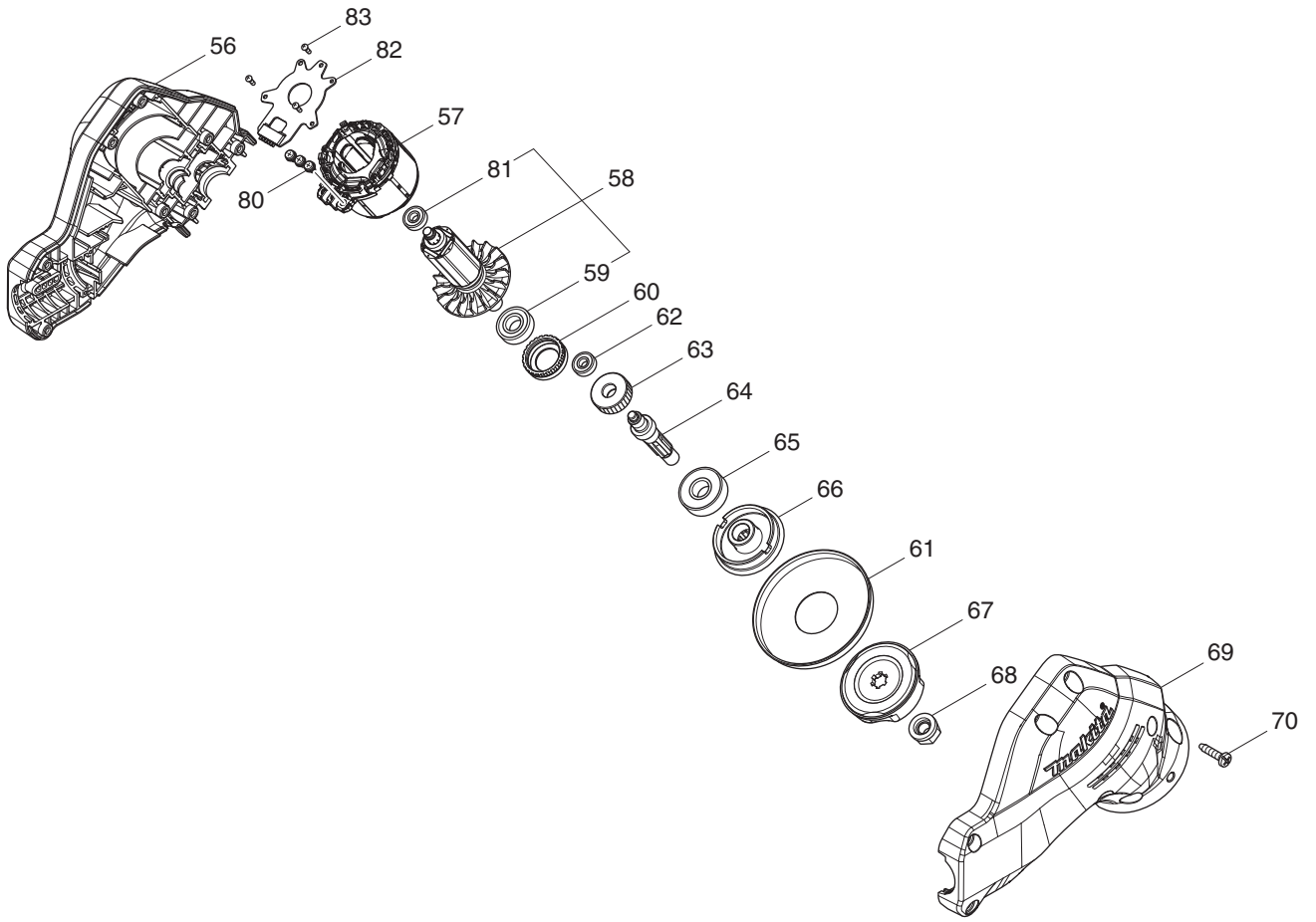


図番	補足コード	部品No.	部品名称／補足説明	使用数	単位英文
001		183A19-1	GRIP SET	1	PC.
001	C10	931202-6	HEX. NUT M5	1	PC.
001	D10		12 ツキ	0	
002		699085-7	POWER SUPPLY CORD UNIT	1	PC.
003		687260-7	STRAIN RELIEF	1	PC.
004		266326-2	TAPPING SCREW 4X18	1	PC.
005		455629-1	LOCK OFF LEVER	1	PC.
006		233621-5	TORSION SPRING 9	1	PC.
007		455625-9	SWITCH LEVER	1	PC.
008		632E26-0	SWITCH UNIT	1	PC.
009		144295-6	SUB CONTROLLER COMPLETE	1	PC.
010		233612-6	TORSION SPRING 10	1	PC.
011		922228-9	H. S. H. BOLT M5X18 WITH WR	1	PC.
012		183A19-1	GRIP SET	1	PC.
012	C10	931202-6	HEX. NUT M5	1	PC.
012	D10		1 ツキ	0	
013		266326-2	TAPPING SCREW 4X18	6	PC.
017		125568-6	HANDLE ASSEMBLY	1	PC.
017	D10		18, 19 ツキ	0	
018		266845-8	BINDING HEAD SCREW M5X25	4	PC.
019		264093-3	HEX. NUT M5	4	PC.
019-1		931202-6	HEX. NUT M5	4	PC.
023		183F35-3	HOUSING SET	1	PC.
023	C10	263005-3	RUBBER PIN 6	2	PC.
023	D10		30 ツキ	0	
024		346248-3	CLAMP 24	1	PC.
025		266326-2	TAPPING SCREW 4X18	1	PC.
026		687260-7	STRAIN RELIEF	1	PC.
027		266326-2	TAPPING SCREW 4X18	1	PC.
028		620584-8	CONTROLLER	1	PC.
030		183F35-3	HOUSING SET	1	PC.
030	C10	263005-3	RUBBER PIN 6	2	PC.
030	D10		23 ツキ	0	
031		266326-2	TAPPING SCREW 4X18	6	PC.
033		644809-6	TERMINAL	1	PC.
035		168478-4	HANGER	1	PC.
036		922228-9	H. S. H. BOLT M5X18 WITH WR	1	PC.
037		140B02-7	PIPE COMPLETE C	1	PC.
038		454304-6	JOINT COVER	1	PC.
039		454303-8	LOCK LEVER	1	PC.
040		233604-5	TORSION SPRING 3	1	PC.
041		233211-4	COMPRESSION SPRING 2	1	PC.
042		258010-3	SPRING PIN 2. 5-25	2	PC.
044		265596-0	HEX. BOLT M6X40	1	PC.
045		253332-6	THIN WASHER 6	1	PC.
046		213105-9	O RING 11	1	PC.
047		252159-1	HEX. NUT M6	1	PC.
048		272268-0	LEVER 94	1	PC.

049		961014-3	STOP RING E-8	1	PC.
050		319531-1	JOINT 24 B	1	PC.
051		922311-2	HEX. SOCKET HEAD BOLT M6X12	1	PC.
052		922342-1	HEX. SOCKET HEAD BOLT M6X25	1	PC.
053		931302-2	HEX. NUT M6	1	PC.
054		213275-4	O RING 18	1	PC.
055		699081-5	POWER SUPPLY CORD UNIT	1	PC.
056		183F18-3	MOTOR HOUSING SET	1	PC.
056	D10		69 ツキ	0	
057		629248-1	STATOR	1	PC.
058		519425-2	ROTOR ASS'Y	1	PC.
058	D10		59,81 ツキ	0	
059		211098-4	BALL BEARING 699ZZ	1	PC.
060		424949-4	RUBBER RING 20	1	PC.
061		346622-5	GUARD	1	PC.
062		211157-4	BALL BEARING 695ZZ	1	PC.
063		221492-2	HELICAL GEAR 26	1	PC.
064		326878-6	CUTTER SHAFT	1	PC.
065		210059-1	BALL BEARING 600DDW	1	PC.
066		326906-7	RECEIVE WASHER	1	PC.
067		168797-8	CLAMP WASHER COMPLETE	1	PC.
068		264018-7	HEX. NUT M8	1	PC.
069		183F18-3	MOTOR HOUSING SET	1	PC.
069	D10		56 ツキ	0	
070		266326-2	TAPPING SCREW 4X18	8	PC.
071		424567-8	RUBBER SLEEVE 24	1	PC.
072		922228-9	H. S. H. BOLT M5X18 WITH WR	2	PC.
073		345923-8	PROTECTOR CLAMP	1	PC.
074		457321-5	PROTECTOR	1	PC.
075		144303-3	PIPE COMPLETE B	1	PC.
075	C10	812A04-4	CAUTION LABEL	1	PC.
076		326880-9	STOPPER PIN B	1	PC.
077		699082-3	POWER SUPPLY CORD UNIT	1	PC.
078		213275-4	O RING 18	1	PC.
080		652069-6	FLAT HEAD SCREW M3X6	3	PC.
081		211157-4	BALL BEARING 695ZZ	1	PC.
082		620585-6	CONTROLLER B	1	PC.
083		266490-9	TAPPING SCREW PT 2X6	3	PC.
F01		A-60311		1	
F01	C10	878825-8	CARTON	1	PC.
F02		A-61715		1	
F03		A-65040		1	
F04		A-60442		1	
F04	C10	878798-5	CARTON	1	PC.
F05		A-60458		1	
F06		A-59900		1	
F07		A-60464	BATTERY BL1860B SET	1	PC.
F07	C10	878269-2	CARTON	1	PC.
F08		A-60470		1	

F09		A-67315		1	
F10		A-56926	TIPPED SAW BLADE 230	1	PC.
F11		A-51085		1	
F12		A-61721		1	
F13		JPADC18RF	DC18RF FAST CHARGER	1	PC.
F13	D10		COMPO-PARTS	0	





図番	補足コード	部品No.	部品名称／補足説明	使用数	単位英文
001		158659-8	HANDLE COMPLETE	1	PC.
002		135395-3	HANDLE HOLDER ASS'Y	1	PC.
002	D10		3-7 ヅキ	0	
003		922241-7	HEX. SOCKET HEAD BOLT M5X25	4	PC.
004		318272-6	HANDLE HOLDER 1	1	PC.
005		318273-4	HANDLE HOLDER 2	1	PC.
006		318274-2	HANDLE HOLDER 3	1	PC.
007		922251-4	HEX. SOCKET HEAD BOLT M5X30	2	PC.
008		332068-1	HANDLE 19	1	PC.
009		183A77-7	GRIP SET	1	PC.
009	D10		15 ヅキ	0	
010		144295-6	SUB CONTROLLER COMPLETE	1	PC.
012		455629-1	LOCK OFF LEVER	1	PC.
013		233612-6	TORSION SPRING 10	1	PC.
014		455816-2	SWITCH LEVER	1	PC.
015		183A77-7	GRIP SET	1	PC.
015	D10		9 ヅキ	0	
016		632E40-6	SWITCH UNIT	1	PC.
017		233621-5	TORSION SPRING 9	1	PC.
018		687260-7	STRAIN RELIEF	1	PC.
019		266326-2	TAPPING SCREW 4X18	1	PC.
020		266326-2	TAPPING SCREW 4X18	5	PC.
021		911258-5	PAN HEAD SCREW M5X35	1	PC.
022		699084-9	POWER SUPPLY CORD UNIT	1	PC.
023		183F35-3	HOUSING SET	1	PC.
023	D10		30 ヅキ	0	
024		346248-3	CLAMP 24	1	PC.
025		266326-2	TAPPING SCREW 4X18	1	PC.
026		687260-7	STRAIN RELIEF	1	PC.
027		266326-2	TAPPING SCREW 4X18	1	PC.
028		620584-8	CONTROLLER	1	PC.
030		183F35-3	HOUSING SET	1	PC.
030	D10		23 ヅキ	0	
031		266326-2	TAPPING SCREW 4X18	6	PC.
033		644809-6	TERMINAL	1	PC.
034		424463-0	CUSHION	1	PC.
035		168478-4	HANGER	1	PC.
035	C10	931202-6	HEX. NUT M5	1	PC.
036		922228-9	H. S. H. BOLT M5X18 WITH WR	1	PC.
037		332069-9	PIPE B	1	PC.
038		454304-6	JOINT COVER	1	PC.
039		454303-8	LOCK LEVER	1	PC.
040		233604-5	TORSION SPRING 3	1	PC.
041		233211-4	COMPRESSION SPRING 2	1	PC.
042		258010-3	SPRING PIN 2.5-25	2	PC.
044		265596-0	HEX. BOLT M6X40	1	PC.
045		253332-6	THIN WASHER 6	1	PC.
046		213105-9	O RING 11	1	PC.



047		252159-1	HEX. NUT M6	1	PC.
048		272268-0	LEVER 94	1	PC.
049		961014-3	STOP RING E-8	1	PC.
050		319531-1	JOINT 24 B	1	PC.
051		922311-2	HEX. SOCKET HEAD BOLT M6X12	1	PC.
052		922342-1	HEX. SOCKET HEAD BOLT M6X25	1	PC.
053		931302-2	HEX. NUT M6	1	PC.
054		213275-4	O RING 18	1	PC.
054-1		213275-4	O RING 18	1	PC.
055		699081-5	POWER SUPPLY CORD UNIT	1	PC.
056		183F18-3	MOTOR HOUSING SET	1	PC.
056	D10		69 ッキ	0	
057		629248-1	STATOR	1	PC.
058		519425-2	ROTOR ASS' Y	1	PC.
058	D10		59,81 ッキ	0	
059		211098-4	BALL BEARING 699ZZ	1	PC.
060		424949-4	RUBBER RING 20	1	PC.
061		346622-5	GUARD	1	PC.
062		211157-4	BALL BEARING 695ZZ	1	PC.
063		221492-2	HELICAL GEAR 26	1	PC.
064		326878-6	CUTTER SHAFT	1	PC.
065		210059-1	BALL BEARING 600DDW	1	PC.
066		326906-7	RECEIVE WASHER	1	PC.
067		168797-8	CLAMP WASHER COMPLETE	1	PC.
068		264018-7	HEX. NUT M8	1	PC.
069		183F18-3	MOTOR HOUSING SET	1	PC.
069	D10		56 ッキ	0	
070		266326-2	TAPPING SCREW 4X18	8	PC.
071		424567-8	RUBBER SLEEVE 24	1	PC.
072		922228-9	H. S. H. BOLT M5X18 WITH WR	2	PC.
073		345923-8	PROTECTOR CLAMP	1	PC.
074		457321-5	PROTECTOR	1	PC.
075		144303-3	PIPE COMPLETE B	1	PC.
075	C10	812A04-4	CAUTION LABEL	1	PC.
075	C20	812L76-5	CAUTION LABEL	1	PC.
075	C21	816D23-0	CAUTION LABEL	1	PC.
075	C30	819312-8	MAKITA LOGO LABEL	1	PC.
076		326880-9	STOPPER PIN B	1	PC.
077		699082-3	POWER SUPPLY CORD UNIT	1	PC.
078		213275-4	O RING 18	1	PC.
080		652069-6	FLAT HEAD SCREW M3X6	3	PC.
081		211157-4	BALL BEARING 695ZZ	1	PC.
082		620585-6	CONTROLLER B	1	PC.
083		266490-9	TAPPING SCREW PT 2X6	3	PC.
F01		A-60442		1	
F01	C10	878798-5	CARTON	1	PC.
F01	C20	807M55-2	MADE IN VIETNAM LABEL	1	PC.
F02		450128-8	BATTERY COVER	1	PC.
F03		A-60458		1	

F04		JPADC18RC	DC18RC FAST CHARGER	1	PC.
F04	D10		COMPO-PARTS	0	
F05		JPADC18SD	DC18SD BATTERY CHARGER	1	PC.
F05	D10		COMPO-PARTS	0	
F06		JPADC18SE		1	
F06	D10		COMPO-PARTS	0	
F07		A-51085		1	
F07	D10		COMPO-PARTS	0	
F08		125516-5	BAND ASSEMBLY	1	PC.
F09		195246-2	SAFETY GOGGLE	1	PC.
F10		783202-0	HEX. WRENCH 4	1	PC.
F11		831304-7	ACCESSORY BAG	1	PC.
F12		456924-2	TOOL COVER	1	PC.
F13		A-40777		1	
F14		A-33118		1	
F15		A-16112	CHIP SAW (230MM T32)	1	PC.
F17		A-35623	CARBIDE-TIPPED SAW BLADE 230	1	PC.
F18		A-46729		1	
F19		A-49971		1	
F20		A-00701		1	
F21		A-00717		1	
F22		A-13823		1	
F22	D10		COMPO-PARTS	0	
F23		A-51091		1	
F24		A-51079		1	
F25		A-56926	TIPPED SAW BLADE 230	1	PC.
F26		A-55164	NYLON CODE CUTTER	1	PC.
F26	D10		COMPO-PARTS	0	
F27		JPADC18SF		1	
F27	D10		COMPO-PARTS	0	
F28		A-56873	PROTECTOR SET FOR NYLON CODE	1	PC.
F28-1		A-61721		1	
F29		A-60844		1	
F30		A-60850		1	
F31		A-61715		1	
F32		A-65040		1	
F33		JPADC18RE		1	
F33	D10		COMPO-PARTS	0	
F34		A-60311		1	
F34	C10	878825-8	CARTON	1	PC.
F35		A-59900		1	
F36		A-67315		1	