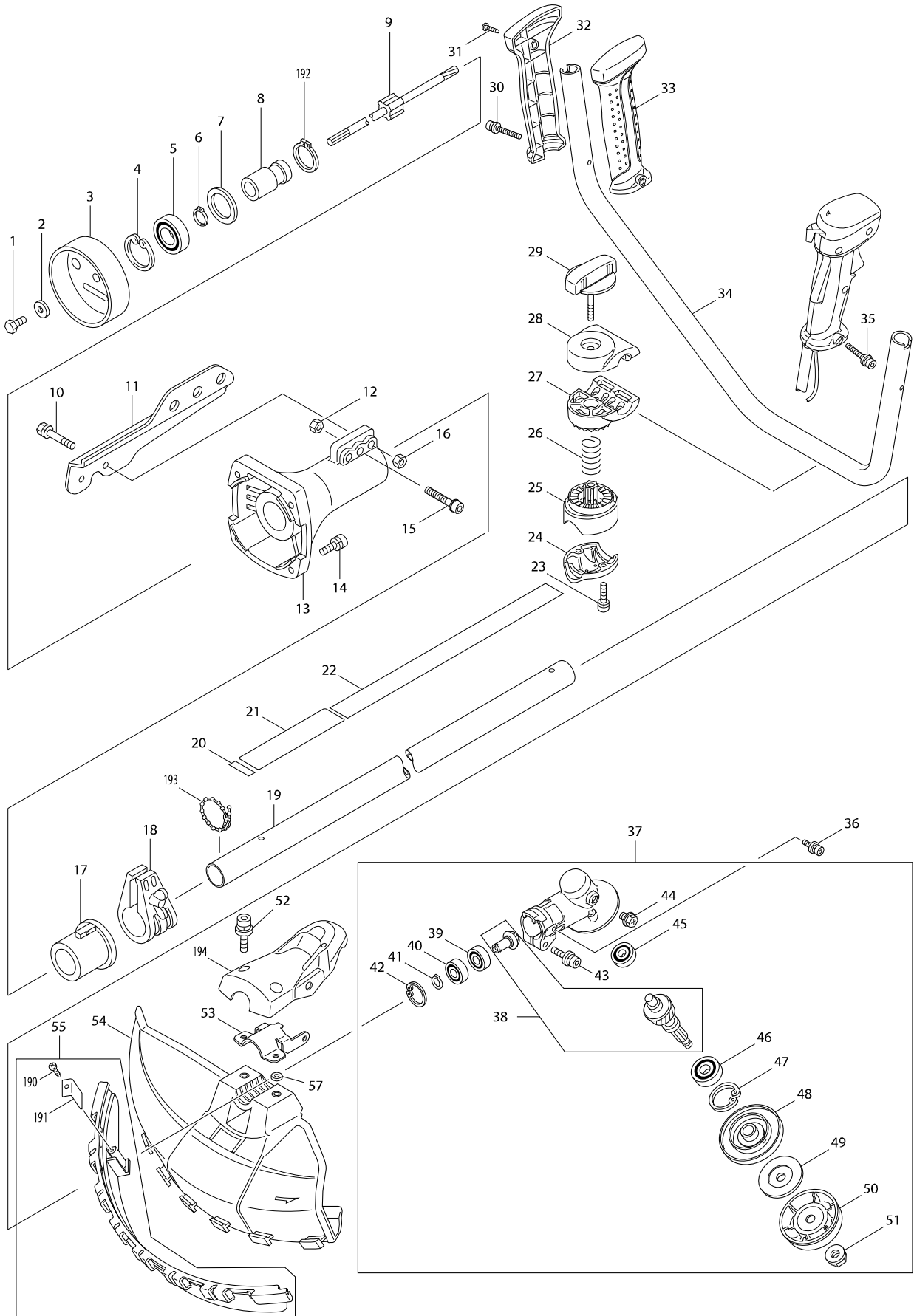
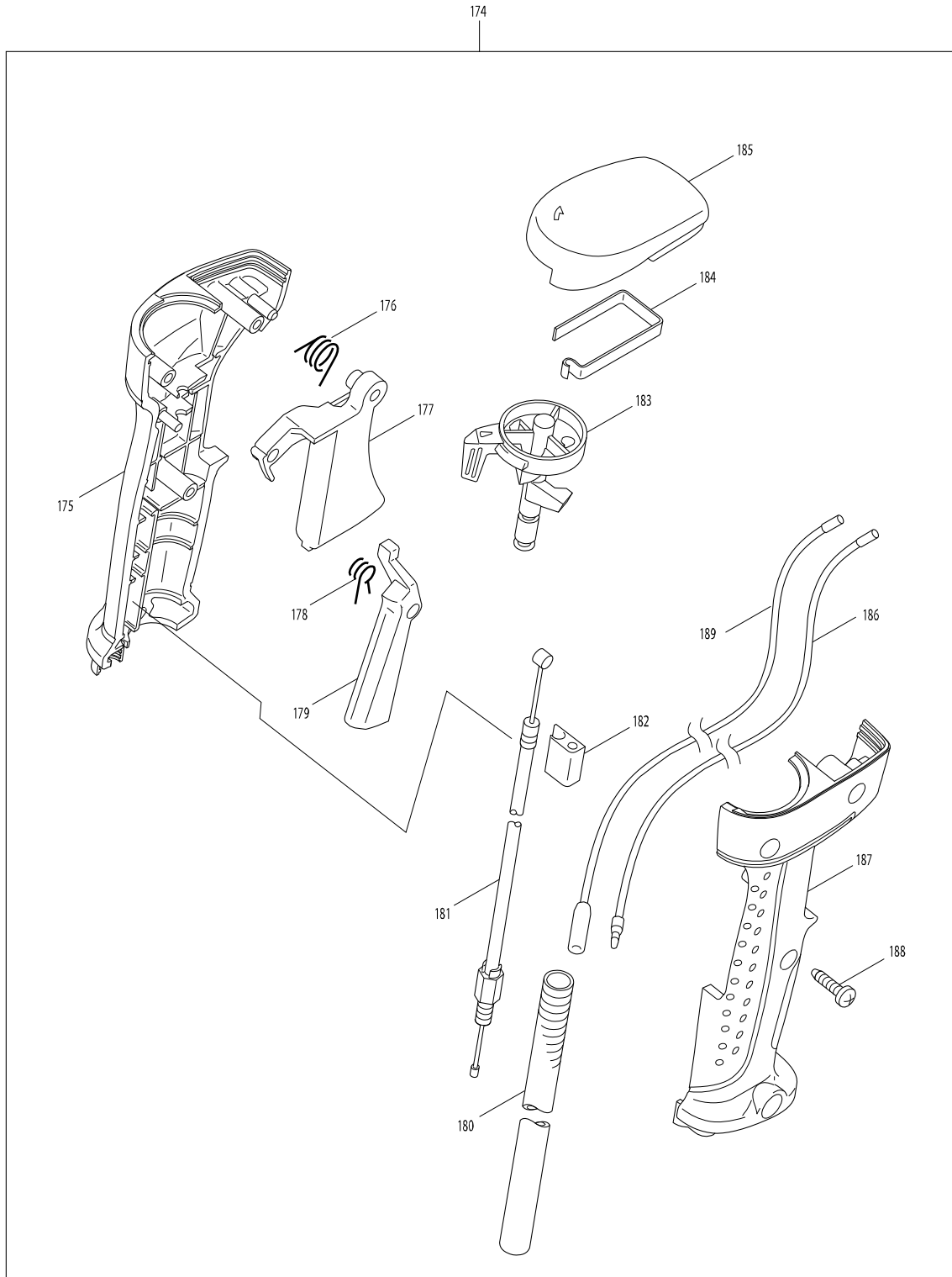


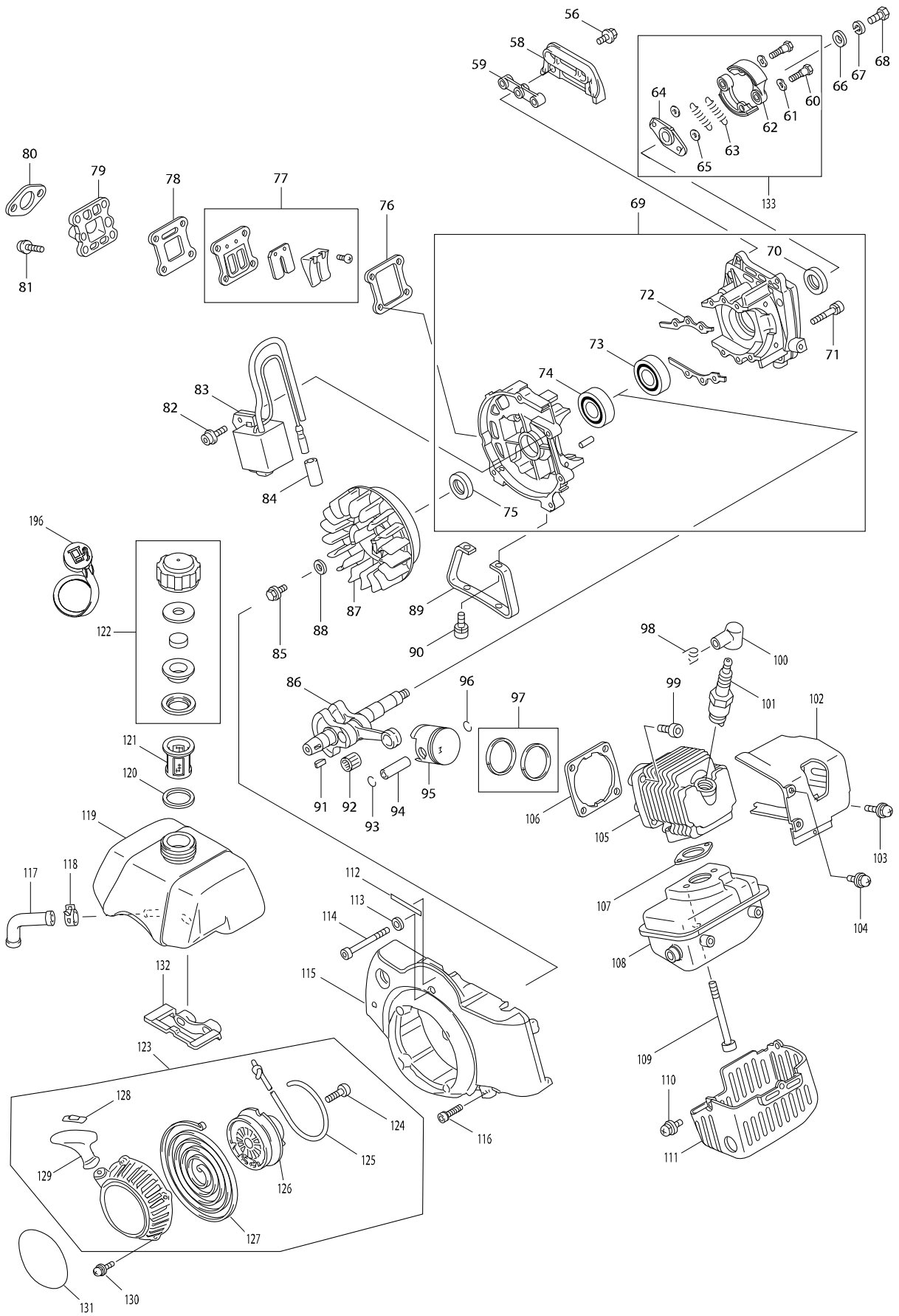
型號 RBC412U 肩掛式引擎割草機2ST/41CC



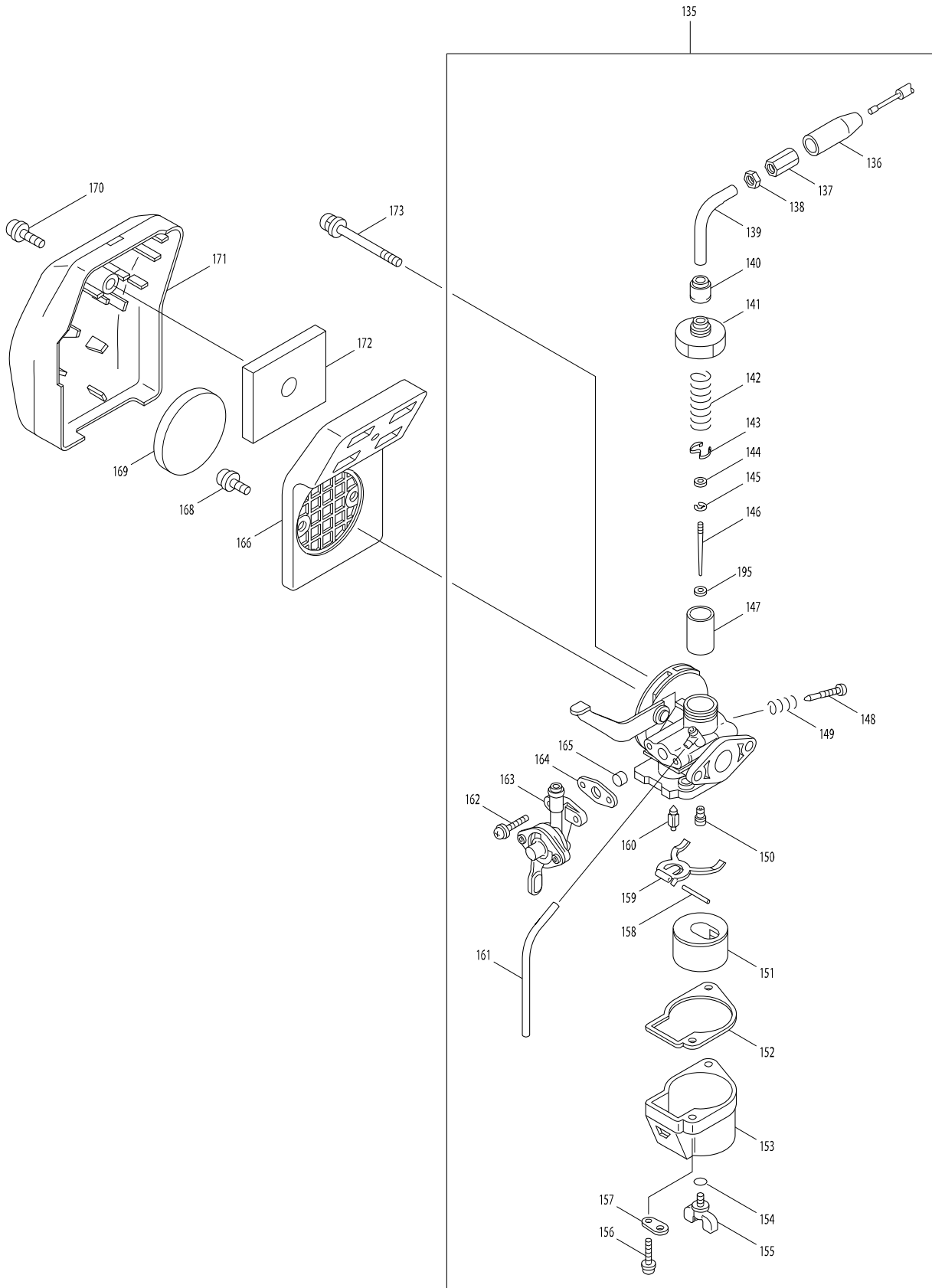
型號 RBC412U 肩掛式引擎割草機2ST/41CC



型號 RBC412U 肩掛式引擎割草機2ST/41CC



型號 RBC412U 肩掛式引擎割草機2ST/41CC



型號 RBC412U 肩掛式引擎割草機2ST/41CC

| 分解圖號 | 零件編號 | 品名 | 交換 | 數量 | N/O | 選擇1 | 選擇2 | 註記 |
|-------|----------|----------------------|----|----|-----|-----|-----|----|
| 001 | 266598-9 | 內六角螺絲 M6X14 | | 1 | * | | | |
| 001-1 | 251527-5 | HEX. HEAD BOLT M6X14 | < | 1 | | | | |
| 002 | 267429-5 | 平面墊圈 6 | | 1 | | | | |
| 003 | 141689-6 | 離合器鼓組 | | 1 | | | | |
| 004 | 962153-2 | 擋圈R-35 | | 1 | | | | |
| 005 | 210126-2 | 培林 6003LLU | | 1 | | | | |
| 006 | 961057-5 | 擋圈 S-17 | | 1 | | | | |
| 007 | 267445-7 | 墊圈 24.5 | | 1 | | | | |
| 008 | 424403-8 | 阻尼器 | | 1 | | | | |
| 009 | 142144-1 | 軸管 | | 1 | | | | |
| 010 | 922353-6 | 內六角螺絲M6X30 | | 2 | | | | |
| 011 | 346356-0 | 吊架 | | 1 | | | | |
| 012 | 931302-2 | 六角螺母 M6 | | 1 | | | | |
| 013 | 140628-3 | 離合器殼組 | | 1 | | | | |
| C10 | 257289-3 | SPACER | | 1 | | | | |
| 014 | 922336-6 | H.S.H.螺絲 M6X22 | | 4 | | | | |
| 015 | 922358-6 | 內六角螺絲M6X35 | | 1 | | | | |
| 016 | 931302-2 | 六角螺母 M6 | | 2 | | | | |
| 017 | 452287-4 | 制動器 | | 1 | | | | |
| 018 | 140629-1 | 制動器組 | | 1 | | | | |
| C10 | 941151-9 | 平面墊圈 6 | | 1 | | | | |
| 019 | 142217-0 | 軸管組 | | 1 | | | | |
| C10 | 808723-2 | 注意標籤 | | 1 | | | | |
| D10 | | INC. 22 | | | | | | |
| 020 | 814L23-2 | SERIAL NO. LABEL | | 1 | * | | | |
| 020-1 | 814E64-6 | 序號標籤 | < | 1 | | | | |
| 021 | 819312-8 | MAKITA 標誌標籤 | | 1 | | | | |
| 022 | 801U60-9 | 注意標籤 | | 1 | | | | |
| 023 | 922341-3 | H.S.H.螺絲 M6X25 | | 2 | | | | |
| 024 | 318422-3 | 管夾 | | 1 | | | | |
| 025 | 318423-1 | 管座 | | 1 | | | | |
| 026 | 233202-5 | 扭力彈簧 20 | | 1 | | | | |
| 027 | 318424-9 | 握把座 | | 1 | | | | |
| 028 | 318425-7 | 握把夾座 | | 1 | | | | |
| 029 | 168796-0 | 旋鈕 57 | | 1 | | | | |
| 030 | 922256-4 | H.S.H.螺絲 M5X35 | | 1 | | | | |
| 031 | 266326-2 | 螺絲 M4X18 | | 1 | | | | |
| 032 | 188660-9 | 把手組 | | 1 | | | | |
| D10 | | INC. 33 | | | | | | |
| 033 | 188660-9 | 把手組 | | 1 | | | | |
| D10 | | INC. 32 | | | | | | |
| 034 | 331863-6 | 握把 22 | | 1 | | | | |
| 035 | 922256-4 | H.S.H.螺絲 M5X35 | | 1 | | | | |
| 036 | 922218-2 | 內六角螺絲 M5X14 | | 2 | | | | |
| 037 | 126310-8 | 齒輪座組 | | 1 | | | | |
| C10 | 213459-4 | O 形環 32 | | 1 | | | | |
| D10 | | INC. 38-51 | | | | | | |
| 038 | 187644-4 | 刀具車心組 | | 1 | | | | |

請訂購一個零件。

列印日期 2017/11/24

型號 RBC412U 肩掛式引擎割草機2ST/41CC

| 分解圖號 | 零件編號 | 品名 | 交換 | 數量 | N/O | 選擇1 | 選擇2 | 註記 |
|-------|------------|-----------------------|----|----|-----|-----|-----|----|
| 039 | 211064-1 | 軸承6000 | | 1 | | | | |
| 040 | 211062-5 | 培林 6000ZZ | | 1 | | | | |
| 041 | 961006-2 | 擋圈 S-10 | | 1 | | | | |
| 042 | 962105-3 | 擋圈R-26 | | 1 | | | | |
| 043 | 922353-6 | 內六角螺絲M6X30 | | 1 | | | | |
| 044 | 265590-2 | +六角螺栓 M8X10 (W, R) R) | | 1 | | | | |
| 045 | 210081-8 | 培林 629ZZ | | 1 | | | | |
| 046 | 210116-5 | 培林6201LLU | | 1 | | | | |
| 047 | 962151-6 | 擋圈 R-32 | | 1 | | | | |
| 048 | 331860-2 | 接收墊圈 | | 1 | * | | | |
| 048-1 | 332114-0 | RECEIVE WASHER | < | 1 | | | | |
| 049 | 346355-2 | 夾墊圈 | | 1 | | | | |
| 050 | 168526-9 | 護罩 | | 1 | | | | |
| 051 | 264025-0 | 六角螺帽 M10-17 | | 1 | | | | |
| 052 | 922328-5 | 六角承窩圓柱頭螺栓 M6X18 (W, | | 2 | | | | |
| 053 | 346642-9 | 保護壓板 | | 1 | | | | |
| 054 | 453874-2 | 保護裝置 | | 1 | | | | |
| 056 | 266595-5 | 螺絲 | | 2 | | | | |
| 058 | 168586-1 | 油箱支架組 | | 1 | * | | | |
| 058-1 | 455434-6 | FUEL TANK BRACKET | S | 1 | | | | |
| 059 | 424335-9 | 支架調節器 | | 1 | * | | | |
| 059-1 | 424660-8 | BRACKET DAMPER | S | 1 | | | | |
| 060 | 266597-1 | 螺絲 M8 | | 2 | * | | | |
| 060-1 | 266894-5 | SHOULDER HEX. BOLT M8 | O | 2 | * | | | |
| 060-2 | 251523-3 | SHOULDER HEX. BOLT M8 | O | 2 | | | | |
| 061 | 267849-3 | W墊圈 10 | | 2 | * | | | |
| 061-1 | 253385-5 | WAVE WASHER 10 | O | 2 | | | | |
| 062 | 168622-3 | 離合器蹄 | | 2 | * | | | |
| 062-1 | 161465-2 | CLUTCH SHOE | S | 2 | | | | |
| 063 | 231869-3 | 彈簧 | | 2 | * | | | |
| 063-1 | AN23010C00 | SPRING | S | 2 | | | | |
| 064 | 313197-9 | 座 | | 1 | * | | | |
| 064-1 | 310774-8 | HOLDER | O | 1 | | | | |
| 065 | 267428-7 | F墊圈8 | | 2 | * | | | |
| 065-1 | 253384-7 | FLAT WASHER 8 | O | 2 | | | | |
| 066 | 267429-5 | 平面墊圈 6 | | 1 | | | | |
| 067 | 942151-2 | 彈性墊圈 6 | | 1 | | | | |
| 068 | 266598-9 | 內六角螺絲 M6X14 | | 1 | * | | | |
| 068-1 | 251527-5 | HEX. HEAD BOLT M6X14 | < | 1 | | | | |
| 069 | 135558-1 | 曲軸箱 | | 1 | | | | |
| D10 | | INC. 70-75 | | | | | | |
| 070 | 213546-9 | 油封 15 | | 1 | | | | |
| 071 | 922251-4 | 六角承窩圓柱頭螺栓 M5X30 | | 4 | * | | | |
| 071-1 | 922252-2 | 螺栓 M5X30 | O | 4 | | | | |
| 072 | 442157-5 | 曲軸座墊片 | | 1 | | | | |
| 073 | 211483-1 | 培林 6202 | | 1 | | | | |
| 074 | 211483-1 | 培林 6202 | | 1 | | | | |
| 075 | 213546-9 | 油封 15 | | 1 | | | | |

請訂購一個零件。

列印日期 2017/11/24

型號 RBC412U 肩掛式引擎割草機2ST/41CC

| 分解圖號 | 零件編號 | 品名 | 交換 | 數量 | N/O | 選擇1 | 選擇2 | 註記 |
|-------|------------|-----------------------------|----|----|-----|-----|-----|----|
| 076 | 442160-6 | 前閥門墊片 | | 1 | | | | |
| 077 | 125796-3 | 前閥門組件 | | 1 | | | | |
| 078 | 442158-3 | 絕緣器墊片 | | 1 | | | | |
| 079 | 451999-6 | 絕緣器組 | | 1 | | | | |
| 080 | 442159-1 | 化油氣墊片 | | 1 | | | | |
| 081 | 266590-5 | 螺絲 M5X20 | | 4 | * | | | |
| 081-1 | 266903-0 | 螺絲 M5X20 | < | 4 | | | | |
| 082 | 922236-0 | H.S.H.螺絲 M5X22 | | 2 | | | | |
| 083 | 168587-9 | 點火線圈 | | 1 | | | | |
| C10 | 140885-3 | 線組 | | 1 | | | | |
| 084 | 422059-1 | 管 | | 1 | | | | |
| 085 | 266596-3 | 螺絲 M6X16 | | 1 | | | | |
| 086 | 125795-5 | 曲軸總成 | | 1 | * | | | |
| 086-1 | 142159-8 | 曲軸總成 | O | 1 | | | | |
| 087 | 318632-2 | 飛輪 | | 1 | | | | |
| 088 | 267427-9 | 平面墊圈 7 | | 1 | | | | |
| 089 | 346286-5 | 架子 | | 1 | | | | |
| 090 | 922316-2 | H.S.H.螺絲 M6X14 | | 2 | | | | |
| 091 | 254040-2 | 半圓鍵 3 | | 1 | | | | |
| 092 | 212085-6 | 針型培林 1014 | | 1 | | | | |
| 093 | 233983-1 | 夾 | | 1 | | | | |
| 094 | 257797-4 | 活塞銷 | | 1 | | | | |
| 095 | 318631-4 | 活塞銷 | | 1 | | | | |
| 096 | 233983-1 | 夾 | | 1 | | | | |
| 097 | 257309-3 | 活塞圈 | | 2 | | | | |
| 098 | 324891-8 | 火星塞帽彈簧 | | 1 | | | | |
| 099 | 922327-7 | H.S.H.螺絲 M6X18 | | 4 | * | | | |
| 099-1 | 922332-4 | HEX. SOCKET HEAD BOLT M6X20 | O | 4 | | | | |
| 100 | 424337-5 | 火星塞帽 | | 1 | | | | |
| 101 | 168588-7 | 火星塞 | | 1 | | | | |
| 102 | 452003-4 | 汽 0缸蓋 | | 1 | | | | |
| 103 | 911233-1 | 螺絲 M5X20 | | 1 | * | | | |
| 103-1 | 0140059330 | SCREW M5X20(WSW) | < | 1 | * | | | |
| 103-2 | 265A08-9 | PAN HEAD SCREW M5X20 | O | 1 | | | | |
| 104 | 911218-7 | 盤頭螺絲 M5X14 | | 1 | * | | | |
| 104-1 | 266677-3 | PAN HEAD SCREW M5X14 | < | 1 | | | | |
| 105 | 318630-6 | 汽缸 | | 1 | | | | |
| 106 | 442156-7 | 汽缸墊片 | | 1 | | | | |
| 107 | 168584-5 | 排氣管墊片 | | 1 | | | | |
| 108 | 168589-5 | 排氣管 | | 1 | * | | | |
| 108-1 | 161573-9 | MUFFLER | O | 1 | | | | |
| 109 | 266589-0 | 螺絲 M6X60 | | 2 | | | | |
| 110 | 911218-7 | 盤頭螺絲 M5X14 | | 3 | * | | | |
| 110-1 | 266677-3 | PAN HEAD SCREW M5X14 | < | 3 | | | | |
| 111 | 451998-8 | 排氣管蓋 | | 1 | | | | |
| 112 | 819967-9 | 製造號碼標籤 | | 1 | | | | |
| 113 | 941102-2 | F 華士 5 | | 1 | | | | |
| 114 | 266592-1 | 螺絲 M5X50 | | 1 | | | | |

請訂購一個零件。

列印日期 2017/11/24

型號 RBC412U 肩掛式引擎割草機2ST/41CC

| 分解圖號 | 零件編號 | 品名 | 交換 | 數量 | N/O | 選擇1 | 選擇2 | 註記 |
|-------|------------|------------------------------|----|----|-----|-----|-----|----|
| 115 | 452002-6 | 風箱外殼 | | 1 | | | | |
| 116 | 922236-0 | H.S.H.螺絲 M5X22 | | 2 | | | | |
| 117 | 422060-6 | 彎頭管 | | 1 | | | | |
| 118 | 346285-7 | 油管夾 | | 1 | | | | |
| 119 | 452004-2 | 油箱支架組 | | 1 | | | | |
| 120 | 423412-4 | 油蓋襯墊 | | 1 | * | | | |
| 121 | 168585-3 | 加油口濾網 F/RBC412U | | 1 | * | | | |
| 121-1 | 161446-6 | FUEL FILTER | S | 1 | | | | |
| 122 | 125799-7 | 油箱蓋組 F/RBC412U | | 1 | | | | |
| 123 | 126108-3 | 啟動器組 C/126364-5 | | 1 | * | | | |
| D10 | | INC. 124-129 | | | * | | | |
| 123-1 | 126364-5 | 啟動器組 | O | 1 | | | | |
| D10 | | INC. 124-129 | | | | | | |
| 124 | 266634-1 | 固定螺絲 M6X20 | | 1 | * | | | |
| 124-1 | 266634-1 | 固定螺絲 M6X20 | O | 1 | * | | | |
| 124-2 | SG00000013 | SET SCREW M6X20 | O | 1 | | | | |
| 125 | 444027-4 | 啟動繩 | | 1 | * | | | |
| 125-1 | SG00000019 | STARTER ROPE | X | 1 | | | | |
| 126 | 453466-7 | 捲軸 | | 1 | * | | | |
| 126-1 | 452288-2 | REEL | X | 1 | | | | |
| 127 | 232262-4 | 螺旋彈簧 | | 1 | * | | | |
| 127-1 | SG00000018 | SPIRAL SPRING | X | 1 | | | | |
| 128 | 424360-0 | 繩栓 | | 1 | * | | | |
| 128-1 | 424360-0 | 繩栓 | O | 1 | | | | |
| 129 | 424361-8 | 啟動柄 | | 1 | * | | | |
| 129-1 | 424361-8 | 啟動柄 | O | 1 | | | | |
| 130 | 911218-7 | 盤頭螺絲 M5X14 | | 4 | | | | |
| 131 | 801A86-1 | 標籤 | | 1 | | | | |
| 132 | 424336-7 | 油箱阻尼器 | | 1 | | | | |
| 133 | 125829-4 | 離合器組 | | 1 | * | | | |
| D10 | | INC. 60-65 | | | * | | | |
| 133-1 | 125829-4 | 離合器組 | O | 1 | * | | | |
| D10 | | INC. 60-65 | | | * | | | |
| 133-2 | 123885-8 | CLUTCH ASSEMBLY | O | 1 | | | | |
| D10 | | INC. 60-65 | | | | | | |
| 135 | 168590-0 | 化油器 | | 1 | * | | | |
| D10 | | INC. 136-165 | | | * | | | |
| 135-1 | 161445-8 | CARBURETOR | O | 1 | | | | |
| 136 | 286290-1 | 蓋 | | 1 | * | | | |
| 136-1 | RX00000014 | RUBBER COVER A | X | 1 | | | | |
| 137 | 325997-5 | 調節線 | | 1 | * | | | |
| 137-1 | RX00000015 | THROTTLE CABLE ADJUSTING NUT | X | 1 | | | | |
| 138 | 264045-4 | 螺母 M10 | | 1 | * | | | |
| 138-1 | RX00000016 | NUT M6 | X | 1 | | | | |
| 139 | 331923-4 | 導線器 | | 1 | * | | | |
| 139-1 | RX00000017 | THROTTLE CABLE TUBE | X | 1 | | | | |
| 140 | 286291-9 | 蓋 | | 1 | * | | | |
| 140-1 | RX00000018 | RUBBER COVER | X | 1 | | | | |

請訂購一個零件。

列印日期 2017/11/24

型號 RBC412U 肩掛式引擎割草機2ST/41CC

| 分解圖號 | 零件編號 | 品名 | 交換 | 數量 | N/O | 選擇1 | 選擇2 | 註記 |
|-------|------------|---------------------------|----|----|-----|-----|-----|----|
| 141 | 286035-7 | 混合蓋 | | 1 | * | | | |
| 141-1 | RX00000019 | PISTON CAP | X | 1 | | | | |
| 142 | 234199-1 | 彈簧 | | 1 | * | | | |
| 142-1 | RX00000013 | PISTON SPRING | X | 1 | | | | |
| 143 | 346348-9 | 彈簧板 | | 1 | * | | | |
| 143-1 | RX00000012 | PRESSURE SPRING | X | 1 | | | | |
| 144 | 452279-3 | 襯墊 | | 2 | * | | | |
| 144-1 | RX00000011 | WASHER | X | 2 | | | | |
| 145 | 259049-9 | E—止動圈 | | 1 | * | | | |
| 145-1 | RX00000010 | E RING 1.5 | X | 1 | | | | |
| 146 | 325998-3 | 噴氣針 | | 1 | * | | | |
| 146-1 | RX00000008 | MAIN NEEDLE | X | 1 | | | | |
| 147 | 318666-5 | 活塞閥 | | 1 | * | | | |
| 147-1 | RX00000009 | SLIDE(PISTON)VALVE | X | 1 | | | | |
| 148 | 266632-5 | 調節螺絲 | | 1 | * | | | |
| 148-1 | RX00000007 | IDLE SCREW | X | 1 | | | | |
| 149 | 234198-3 | 彈簧 | | 1 | * | | | |
| 149-1 | RX00000006 | SPRING | X | 1 | | | | |
| 150 | 325999-1 | 主噴嘴 | | 1 | * | | | |
| 150-1 | RX00000003 | MAIN JET | X | 1 | | | | |
| 151 | 452280-8 | 浮筒 | | 1 | * | | | |
| 151-1 | RX00000004 | FLOAT | X | 1 | | | | |
| 152 | 442162-2 | 墊片 | | 1 | * | | | |
| 152-1 | RX00000005 | CHAMBER GASKET | X | 1 | | | | |
| 153 | 318667-3 | 浮桶器 | | 1 | * | | | |
| 153-1 | 310716-2 | FLOAT CHAMBER | X | 1 | | | | |
| 154 | 213590-6 | O圈 | | 1 | * | | | |
| 154-1 | RX00000002 | O-RING | X | 1 | | | | |
| 155 | 265793-8 | 蝶螺絲 M5X25 | | 1 | * | | | |
| 155-1 | RX00000001 | DRAIN SCREW | X | 1 | | | | |
| 156 | 266633-3 | 螺絲 M4X16 | | 2 | * | | | |
| 156-1 | RX00000027 | SCREW M4X16 | X | 2 | | | | |
| 157 | 346349-7 | 板 | | 1 | * | | | |
| 157-1 | RX00000029 | BRACKET | X | 1 | | | | |
| 158 | 268270-9 | 圓柱銷 | | 1 | * | | | |
| 158-1 | RX00000024 | FLOAT PIN | X | 1 | | | | |
| 159 | 346350-2 | 浮臂 | | 1 | * | | | |
| 159-1 | RX00000025 | FLOAT LEVER | X | 1 | | | | |
| 160 | 163519-1 | 針 | | 1 | * | | | |
| 160-1 | RX00000023 | INLET NEEDLE VALVE W/CLIP | X | 1 | | | | |
| 161 | 422069-8 | 管 | | 1 | * | | | |
| 161-1 | RX00000028 | CLEAR HOSE 5-65 | X | 1 | | | | |
| 162 | 266619-7 | 螺絲 | | 2 | * | | | |
| 162-1 | RX00000026 | SCREW M4X14 | X | 2 | | | | |
| 163 | 140633-0 | 活栓組 | | 1 | * | | | |
| 163-1 | RX00000022 | COCK BODY COMPLETE | X | 1 | | | | |
| 164 | 442163-0 | 墊片 | | 1 | * | | | |
| 164-1 | RX00000021 | GASKET B | X | 1 | | | | |

請訂購一個零件。

列印日期 2017/11/24

型號 RBC412U 肩掛式引擎割草機2ST/41CC

| 分解圖號 | 零件編號 | 品名 | 交換 | 數量 | N/O | 選擇1 | 選擇2 | 註記 |
|-------|------------|------------------------------|----|----|-----|-----|-----|----|
| 165 | 352011-4 | 過濾器 | | 1 | * | | | |
| 165-1 | RX00000020 | FILTER SCREEN | X | 1 | | | | |
| 166 | 452000-0 | 空氣濾清板 | | 1 | | | | |
| 168 | 266591-3 | 螺絲 M5X14 | | 2 | | | | |
| 169 | 443161-7 | 元件 | | 1 | | | | |
| 170 | 911233-1 | 螺絲 M5X20 | | 1 | | | | |
| 171 | 452001-8 | 空氣濾清蓋 | | 1 | | | | |
| 172 | 443162-5 | 空氣濾清器 | | 1 | | | | |
| 173 | 266594-7 | 螺絲 M5X58 | | 2 | * | | | |
| 173-1 | 251526-7 | PAN HEAD SCREW M5X56 WITH WR | < | 2 | | | | |
| 174 | 126232-2 | 控制桿 | | 1 | | | | |
| D10 | | INC. 175-189 | | | | | | |
| 175 | 188657-8 | 桿座組 | | 1 | * | | | |
| D10 | | INC. 187 | | | * | | | |
| 175-1 | 183A09-4 | LEVER CASE SET | S | 1 | | | | |
| D10 | | INC. 187 | | | | | | |
| 176 | 233540-5 | 扭力彈簧 11 | | 1 | | | | |
| 177 | 451084-5 | 加油板機 | | 1 | | | | |
| 178 | 233541-3 | 扭力彈簧 7 | | 1 | | | | |
| 179 | 451083-7 | 固定桿 | | 1 | | | | |
| 180 | 451213-0 | 波狀管 | | 1 | | | | |
| 181 | 168778-2 | 控制線 | | 1 | | | | |
| 182 | 451081-1 | 纜線支架 | | 1 | | | | |
| 183 | 451500-7 | 開關桿 | | 1 | | | | |
| 184 | 232251-9 | 板片彈簧 | | 1 | | | | |
| 185 | 451253-8 | 開關蓋 | | 1 | * | | | |
| 185-1 | 455723-9 | SWITCH COVER | S | 1 | | | | |
| 186 | 632A46-0 | 電線 | | 1 | | | | |
| 187 | 188657-8 | 桿座組 | | 1 | * | | | |
| D10 | | INC. 175 | | | * | | | |
| 187-1 | 183A09-4 | LEVER CASE SET | S | 1 | | | | |
| D10 | | INC. 175 | | | | | | |
| 188 | 266326-2 | 螺絲 M4X18 | | 3 | | | | |
| 189 | 632A47-8 | 電線 | | 1 | | | | |
| 192 | 257974-8 | 固定環 28 | | 1 | | | | |
| 193 | 452193-3 | 夾 | | 1 | | | | |
| A01 | 125516-5 | 背帶組 | | 1 | | | | |
| A03 | 782235-2 | 板手 17—19 | | 1 | | | | |
| A04 | 783223-2 | 六角扳手 4 | | 1 | | | | |
| A05 | 783232-1 | 六角扳手 5 | | 1 | | | | |
| A06 | 831304-7 | 附件袋 | | 1 | | | | |
| A07 | 168613-4 | 靠墊 | | 1 | | | | |
| A08 | 140575-8 | FUEL MIXTURE COMPLETE | | 1 | * | | | |
| A08-1 | 452192-5 | 燃料混合瓶 C/456236-3 | O | 1 | * | | | |
| A08-2 | 456236-3 | 燃料混合瓶 | O | 1 | | | | |
| A09 | 195624-6 | 刀刃 305 | | 1 | | | | |
| | | | | | | | | |
| | | | | | | | | |

請訂購一個零件。

列印日期 2017/11/24