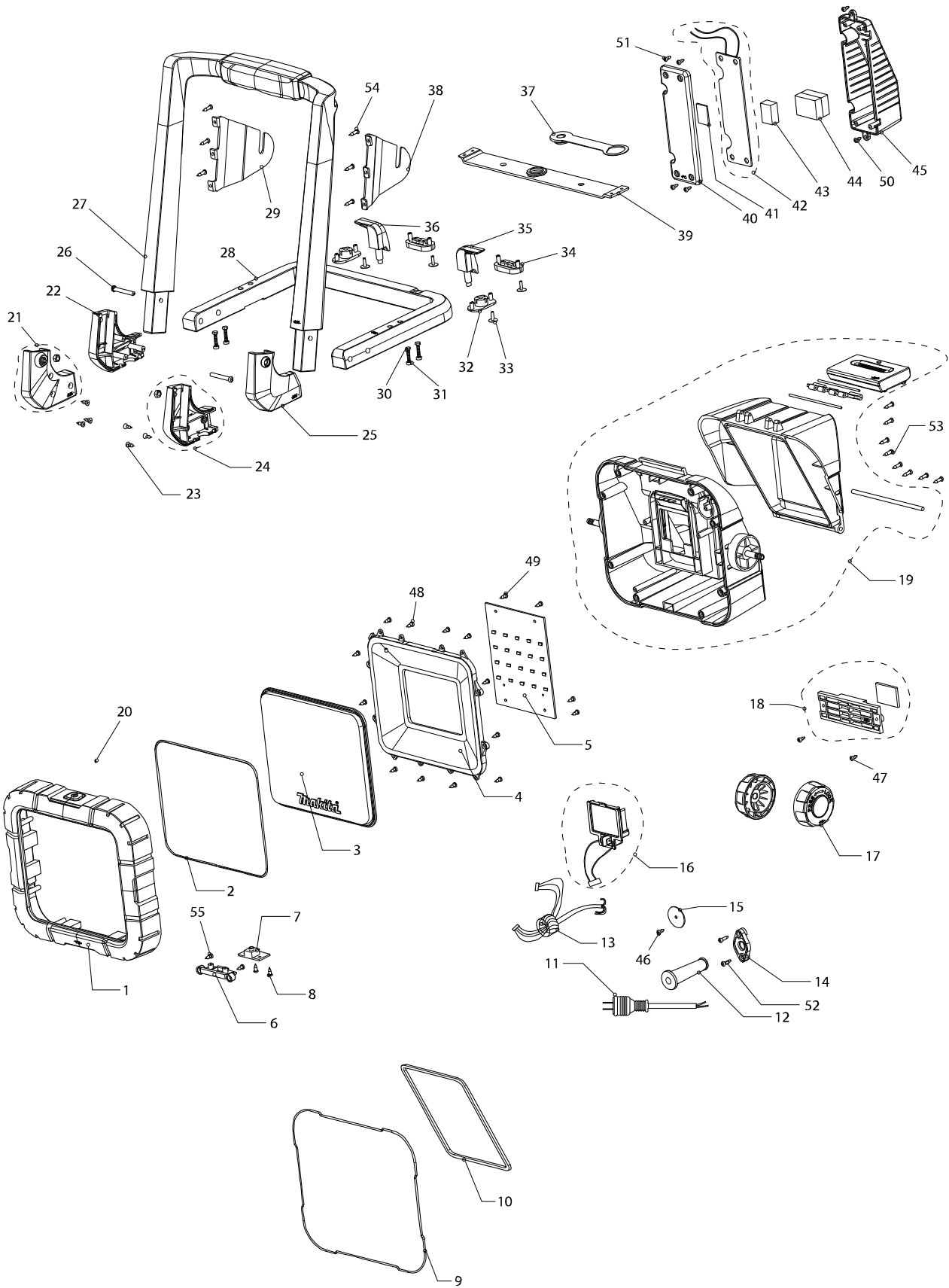


型號 DML805 RECHARGEABLE FLASH LIGHT



型號 DML805 RECHARGEABLE FLASH LIGHT

分解圖號	零件編號	品名	交換	數量	N/O	選擇1	選擇2	註記
001	GM00001356	HOUSING(FRONT) ROS88050100		1				
002	GM00001353	PACKING C9020805002		1				
003	GM00001357	LENS ROS88050200		1	*			
003-1	GM00001378	透鏡	O	1				
004	GM00001358	REFLECTOR ROS88050300		1				
005	GM00001359	LED電路		1				
006	GM00001341	SWITCH BRACKET C2820805007		1				
007	GM00001360	開關電路		1				
008	GM00001332	SCREW 3 X 8 PB B0130080702		2				
009	GM00001354	PACKING C9020805003		1				
010	GM00001352	PACKING C9020805001		1				
011	GM00001327	POWER SUPPLY CORD A1540030300		1	*			
011-1	GM00001327	POWER SUPPLY CORD A1540030300	O	1				
012	GM00001355	CORD GUARD C9020805004		1				
013	GM00001361	LEAD WIRE ASSY ROS88050600		1				
014	GM00001344	CORD CLAMP C2820805010		1				
015	GM00001338	CORD HOLDER B0405805120		1				
016	GM00001362	BATTERY HOLDER ROS88050700		1				
017	GM00001342	KNOB C2820805008		2				
018	GM00001363	FIX PLATE ASSY ROS88050800		1				
019	GM00001364	BATTERY COVER ASSY ROS88050900		1	*			
019-1	GM00001379	BATTERY COVER ASSY ROS88051900	O	1				
020	GM00001343	SWITCH ROD C2820805009		1				
021	GM00001371	BRACKET LR ASSY ROS88051600		1				
022	GM00001345	BRACKET LL C2820805013		1				
023	GM00001334	SCREW 3 X 12 KA B0130120721		6				
024	GM00001372	BRACKET RL ASSY ROS88051700		1				
025	GM00001346	BRACKET RR C2820805016		1				
026	GM00001336	SCREW PM4X29 B0140290704		2				
027	GM00001365	FRAME ROS88051000		1				
028	GM00001366	BASE ROS88051100		1				
029	GM00001367	HANGER L ROS88051200		1				
030	GM00001335	SCREW M3 X18 B0130180754		4				
031	GM00001337	螺母 M3		4				
032	GM00001350	FOOT (FRONT) C7420805002		2				
033	GM00001331	SCREW 2.6 X 10 PWB B0126100706		4				
034	GM00001351	FOOT (BACK) C7420805003		2				
035	GM00001347	CORD HOOK(R) C2820805017		1				
036	GM00001348	CORD HOOK (L) C2820805018		1				
037	GM00001349	ADAPTER C5220805001		1				
038	GM00001368	HANGER R ROS88051300		1				
039	GM00001369	UNDER STAND ROS88051400		1				
040	GM00001340	HOUSING (BOTTOM) C1920805002		1				
041	GM00001329	PAD(A) A3255201500		1	*			
041-1	GM00001374	PAD(A) A3255201501	S	1				
042	GM00001370	POWER CIRCUIT ASSY ROS88051500		1	*			
042-1	GM00001377	POWER CIRCUIT ASSY ROS88051800	S	1				
043	GM00001328	PAD(B) A3255201300		1				

